



DIGITAL INDUSTRIES SOFTWARE

Opcenter APS 18

Enhancing the orchestration of your manufacturing process

Benefits

- New Opcenter APS product branding
- Additional APIs for interacting with advanced highlight and filtering tools
- Extended Opcenter Scheduling Anywhere upload to include facility information
- Compatible with Opcenter Execution Discrete 3.0 and 3.1

Features

- API for interacting with advanced highlighting and filtering results
- Facility definition with Opcenter Scheduling upload facility
- Supports integrations to Siemens
- Opcenter Execution Discrete 3.1 and Valor® Production Plan 14.1

Summary

Opcenter APS (formerly known as Preactor APS) software is a family of production planning and scheduling products that improve the synchronization of your manufacturing processes, giving you greater visibility and control and enabling you to increase resource utilization and on-time delivery while reducing inventory levels and waste. Opcenter APS is a highly customizable capacity planning and scheduling package.

Preactor APS becomes Opcenter APS

Preactor APS becomes Opcenter APS with release 18, with aligned icons and desktop.



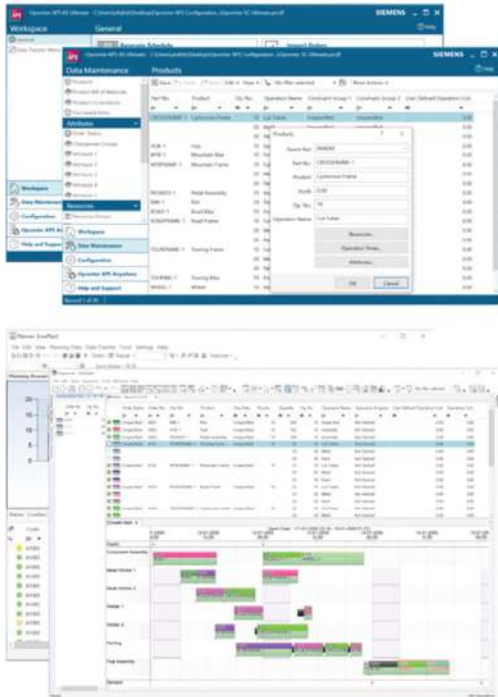
SIEMENS



Goaltech

[siemens.com/mom](https://www.siemens.com/mom)

Opcenter APS 18 comes with an updated look and feel, which aligns the product with the Opcenter portfolio. The updated look and feel comes with new icons throughout the product, along with a new color theme.



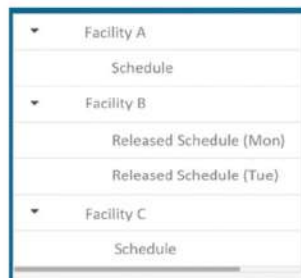
Additional APIs for advanced highlight and filtering tools

Additional application programming interfaces (APIs) have been added to the already extensive API library of Opcenter APS, allowing extensions to be implemented with ease.

```
IPreactor preactor = PreactorFactory.CreatePreactorObject(reactorComObject);
var recordList = preactor.GetSelectedRows();
string rows = string.Empty;
if (recordList.Length == 0)
    rows = "None";
else
{
    foreach (uint row in recordList)
```

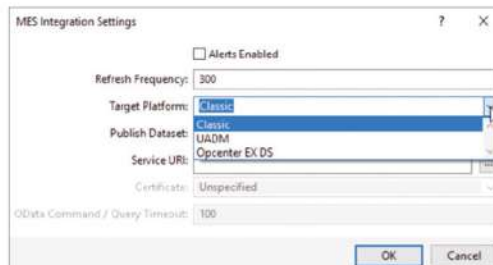
Opcenter Scheduling Anywhere facility upload support

Opcenter Scheduling Anywhere upload now supports the ability to define a facility name, allowing users to separate facility uploads for multiple sites.



Integration with Opcenter Execution Discrete 3.0 and 3.1

Available only for Opcenter Scheduling (Opcenter SC) Ultimate, Opcenter SC integrates with Opcenter Execution Discrete with an out-of-the-box integration between the manufacturing execution system (MES) and advanced planning and scheduling.

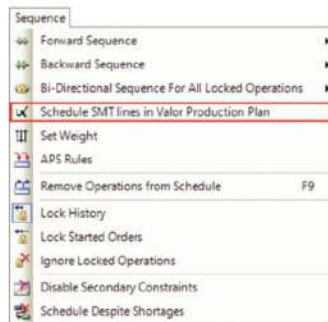
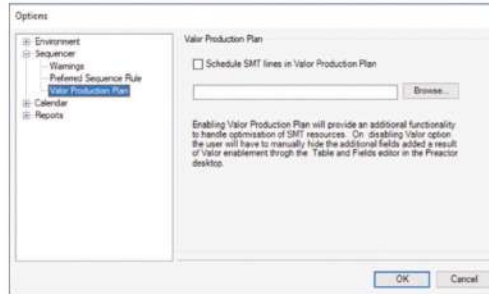


Integration with Valor Production Plan 14.0 and 14.1

Valor Production Plan software creates an easy-to-use yet comprehensive model that allows you to simulate your production process including all surface mount technology (SMT) and manual stations. You can set optimization parameters such as due date, production time and changeover that enable you to make intelligent choices between given plans that fit your exact needs to meet deadlines and avoid downtime.

Opcenter Scheduling Ultimate now includes out-of-the-box integration with Valor Production Plan 14.0 and 14.1.

Valor Production Plan directly interacts with work order, resource and calendar information from within Opcenter APS to provide optimized sequencing of SMT operations.



Siemens Digital Industries Software
[siemens.com/software](https://www.siemens.com/software)

Americas
 1 800 498 5351

Europe
 00 800 70002222

Asia-Pacific
 001 800 03061910

For additional numbers, click [here](#).

© 2020 Siemens. A list of relevant Siemens trademarks can be found [here](#). Other trademarks belong to their respective owners.

81102-D5 1/20 H

