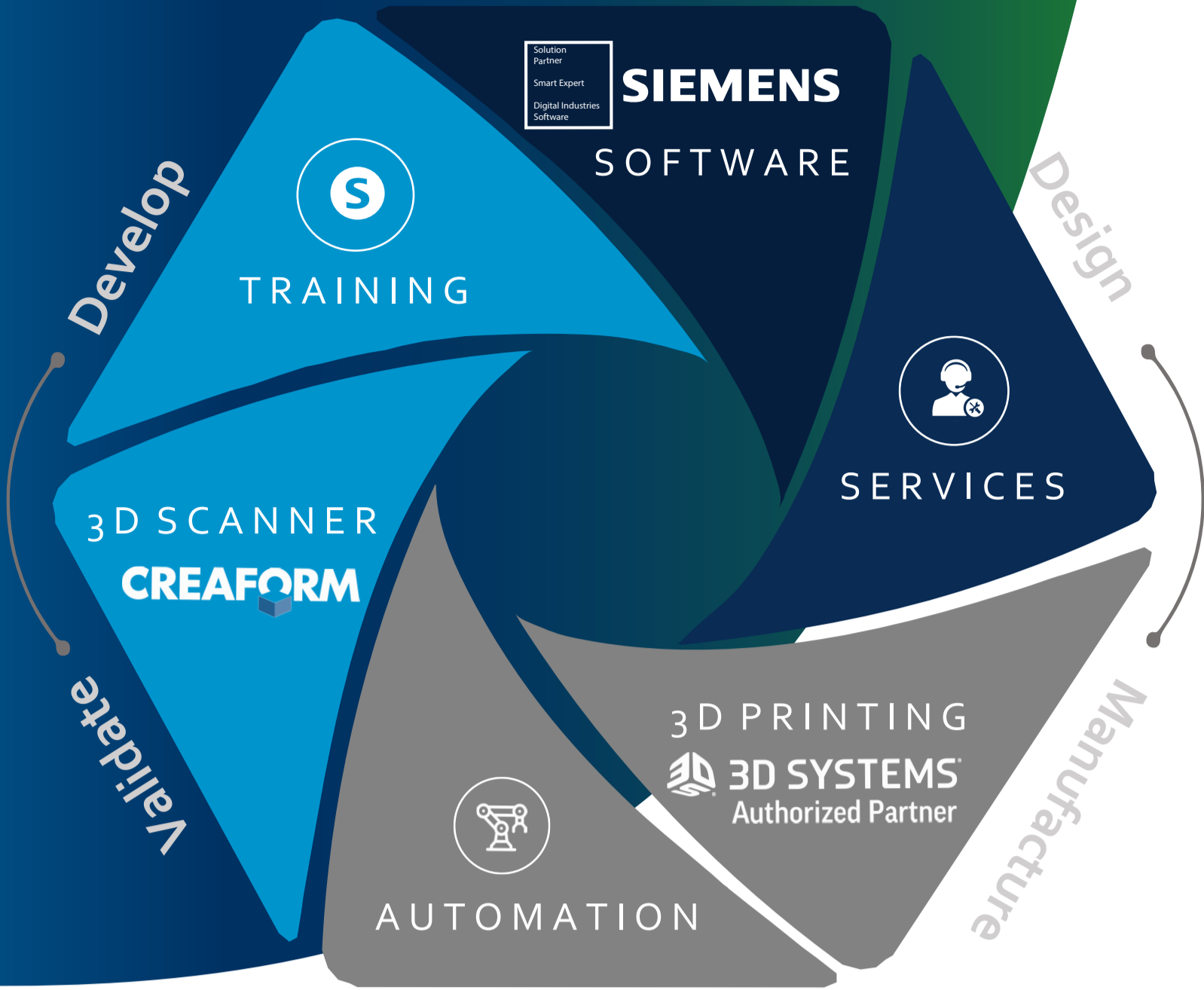


We identify and integrate the digital engineering tools you need, so you can migrate your company towards the development of sustainable products.



## Certified Partners



## Experience & commitment



**13**  
Years of Experience

**7**  
Times recognized as "Partner of the Year"

**90**  
% clients who continue to grow with us

## Grow business with our offer

### Software → SIEMENS

#### NX

Flexible and powerful integrated solution that allows you deliver better products faster and more efficiently.



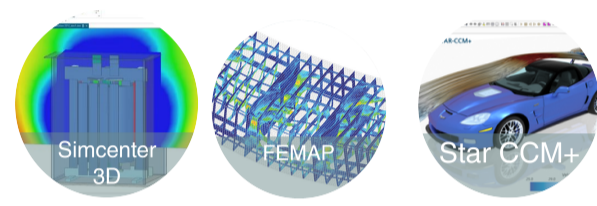
#### SOLID EDGE

Portfolio of affordable, easy to use software tools that address all aspects of the product development process.



#### SIMCENTER

Flexible, open and scalable portfolio with best-in-class simulation and predictive testing applications.



#### TEAMCENTER

Modern, adaptable product lifecycle management (PLM) system that connects people and processes.



#### TECNOMATIX

Model, simulate and optimize a complete digital twin of your manufacturing processes.

#### OP CENTER APS

Increase resource utilization and on-time delivery with production planning and scheduling.

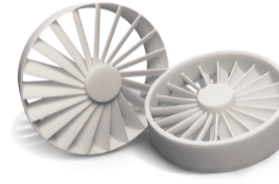
#### DIGITAL MANUFACTURE

- Simulation and Layout changes
- Line Balancing
- Robotic automation/integration
- Process optimization
- Logistics Validation
- Production planning
- Production scheduling
- Floor operations management



### 3D SYSTEMS Authorized Partner ← 3D Printers

#### PRODUCTION



Selective Laser Sintering (SLS)  
Expand your manufacturing capabilities with production-grade materials.



Color Jet Printing (CJP)  
Full-color 3D printing at exceptional print speeds, efficiency and low cost of operation.



Digital Light Printing (DLP)  
High-quality parts with lightning speed, and low operating costs.

#### PROFESSIONALS



Stereolithography (SLA)  
Prototypes, tools and production parts with the gold standard in 3D printing.



MultiJet Printers (MJP)  
Functional precision plastic, elastomeric and composite parts.



Direct Metal Printer (DMP)  
High quality, precision metal manufacturing solutions.

### 3D Scanners → CREAFORM Reseller Partner



HandySCAN 3D I Serie BLACK Accuracy  $\pm 0.025$  mm  
HandySCAN 3D I Serie SILVER Accuracy  $\pm 0.030$  mm  
HandySCAN 3D I MAX Series (large parts) Accuracy  $\pm 0.075$  mm

#### GEOMAGIC DESIGN X



The most complete reverse engineering software, combining CAD with 3D scan data processing.

#### GEOMAGIC CONTROL X



Industry-leading metrology software that facilitates the capture and interpretation of scanned data.

### Automation →

#### AUTOMATED ENGINEERING SOLUTIONS FOR:

Processes

Workstations

Robotic Cells

Other Solutions

CONTINUOUS IMPROVEMENT

### ← Services

Software Services  
Engineering  
CAD CAM CAE



3D Scanning Services  
Reverse engineering  
inspection



3D Printing Services  
3D Lab  
specialized



Specialized Technical  
Certified Engineers  
Local Support



Automation Services  
Solutions for  
your Processes



Customized Training  
Authorized  
Training Center



## Talk to us



Calle Corregidora #903  
Col. San Felipe I C.P.31203  
+52 (614) 481 4339  
Chihuahua, Chih.

Parque Tecnológico ITESM  
Prol. Tecnológico 801 C.P.76130  
+52 (442) 645 5130  
Querétaro, Qro.

info@goal-tech.com.mx  
www.goal-tech.com.mx



### ← Training

Invest in your company's most valuable resources: people.

