

# 3D ColorJet Printers

Brilliant full-color parts with Projet® CJP x60 3D printers



**Projet CJP 260Plus**

**Projet CJP 360**

**Projet CJP 460Plus**

**Projet CJP 660Pro**

**Projet CJP 860Pro**

<b>Net Build Volume (xyz)*</b>	9.3 x 7.3 x 5 in (236 x 185 x 127 mm)	8 x 10 x 8 in (203 x 254 x 203 mm)	8 x 10 x 8 in (203 x 254 x 203 mm)	10 x 15 x 8 in (254 x 381 x 203 mm)	20 x 15 x 9 in (508 x 381 x 229 mm)
<b>Color</b>	CMY	White (monochrome)	CMY	Full CMYK	Full CMYK
<b>Pastel or Vibrant Color Option</b>				•	•
<b>Resolution</b>	300 x 450 DPI	300 x 450 DPI	300 x 450 DPI	600 x 540 DPI	600 x 540 DPI
<b>Layer Thickness</b>	0.004 in (0.1 mm)	0.004 in (0.1 mm)	0.004 in (0.1 mm)	0.004 in (0.1 mm)	0.004 in (0.1 mm)
<b>Minimum Feature Size</b>	0.03 in (0.8 mm)	0.03 in (0.8 mm)	0.03 in (0.8 mm)	0.02 in (0.5 mm)	0.02 in (0.5 mm)
<b>Max. Vertical Build Speed</b>	0.8 in/hour (20 mm/hour)	0.8 in/hour (20 mm/hour)	0.9 in/hour (23 mm/hour)	1.1 in/hour (28 mm/hour)	0.2 – 0.6 in/hour (5 – 15 mm/hour); speed increases with volume of prototypes
<b>Draft Printing Mode (Monochrome)</b>				•	•
<b>Prototypes per Build**</b>	10	18	18	36	96
<b>Number of Jets</b>	604	304	604	1520	1520
<b>Number of Print Heads</b>	2	1	2	5	5
<b>Build Material</b>	Visijet PXL	Visijet PXL	Visijet PXL	Visijet PXL	Visijet PXL
<b>Automated Setup and Self Monitoring</b>	•	•	•	•	•
<b>Material Recycling</b>	•	•	•	•	•
<b>Automatic Build Platform Clearing</b>			•	•	•
<b>Part Cleaning</b>	Accessory	Integrated	Integrated	Integrated	Accessory
<b>Integrated Materials</b>	•	•	•	•	•
<b>Intuitive Control Panel</b>	•	•	•	•	•
<b>Input Data File Formats Supported</b>	STL, VRML, PLY, 3DS, FBX, ZPR				
<b>Client Operating System</b>	Windows® 7 & Vista®	Windows® 7 & Vista®	Windows® 7 & Vista®	Windows® 7 & Vista®	Windows® 7 & Vista®
<b>Operating Temperature Range</b>	55-75°F (13 - 24 °C)	55-75°F (13 - 24 °C)	55-75°F (13 - 24 °C)	55-75°F (13 - 24 °C)	55-75°F (13 - 24 °C)
<b>Operating Humidity Range</b>	20-55% - non-cond.	20-55% - non-cond.	20-55% - non-cond.	20-55% - non-cond.	20-55% - non-cond.
<b>Dimensions (WxDxH)</b> 3D Printer Crated	37 x 47 x 62 in (94 x 119 x 158 cm)	55 x 45 x 62 in (140 x 114 x 158 cm)	55 x 45 x 62 in (140 x 114 x 158 cm)	86 x 48 x 63 in (218 x 122 x 160 cm)	64 x 58 x 73 in (163 x 147 x 185 cm)
3D Printer Uncrated	29 x 31 x 55 in (74 x 79 x 140 cm)	48 x 31 x 55 in (122 x 79 x 140 cm)	48 x 31 x 55 in (122 x 79 x 140 cm)	76 x 32 x 57 in (193 x 81 x 145 cm)	47 x 46 x 68 in (119 x 116 x 162 cm)
<b>Weight</b> 3D Printer Crated	437 lbs (198 kg)	553 lbs (251 kg)	602 lbs (273 kg)	1116 lbs (507 kg)	987 lbs (448 kg)
3D Printer Uncrated	365 lbs (165 kg)	395 lbs (179 kg)	425 lbs (193 kg)	750 lbs (340 kg)	800 lbs (363 kg)
<b>Electrical</b>	90-100V, 7.5A 110-120V, 5.5A 208-240V, 4.0A	90-100V, 7.5A 110-120V, 5.5A 208-240V, 4.0A	90-100V, 7.5A 110-120V, 5.5A 208-240V, 4.0A	100-240V, 15-7.5A	100-240V, 15-7.5A
<b>Noise</b> Building	57 dB	57 dB	57 dB	57 dB	57 dB
Core Recovery	66 dB	66 dB	66 dB	66 dB	66 dB
Vacuum (open)	86 dB	86 dB	86 dB	86 dB	86 dB
Fine Decoring	-	80 dB	80 dB	80 dB	-
<b>Certifications</b>	CE, CSA	CE, CSA	CE, CSA	CE, CSA	CE, CSA

\* Maximum part size is dependent on geometry, among other factors.

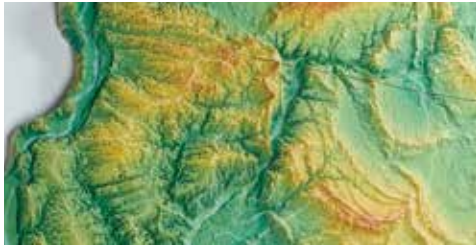
\*\* Based on baseball-size geometry.

# Visijet® PXL Material

With Visijet PXL composite for the Projet CJP x60 printer series, choose from a range of finishing options to meet your needs, from ColorBond infiltration for stronger functional prototypes to wax for creating concept models quickly, safely and affordably.



Photo courtesy of WhiteClouds



MATERIAL	Condition	Visijet PXL	Visijet PXL	Visijet PXL	Visijet PXL
Infiltrant		ColorBond™	StrengthMax™	Salt Water Cure™	Wax
Composition		Visijet PXL + One-part, fast acting adhesive infiltrant	Visijet PXL + Two-part, high strength epoxy infiltrant	Visijet PXL + Eco-friendly and safe salt and water infiltrant	Visijet PXL + Eco-friendly and safe wax infiltrant
Tensile Strength*	ASTM D638	14.2 MPa	26.4 MPa	2.38 MPa	9.2 MPa
Elongation at Break*	ASTM D638	0.23 %	0.21 %	0.04 %	0.09 %
Flexural Strength*	ASTM D790	31.1 MPa	44.1 MPa	13.1 MPa	11.7 MPa
Flexural Modulus*	ASTM D790	7163 MPa	10680 MPa	6355 MPa	4833 MPa
Modulus of Elasticity*	ASTM D638	9450 MPa	12560 MPa	12855 MPa	22570 MPa
Description		Quick-cure infiltrant, ideal for color models to improve strength and color vibrancy. The most popular solution.	Two-part epoxy infiltrant, ideal for functional models to dramatically improve the strength.	For monochrome models only. Provides sufficient strength for safe handling and is very economical.	Ideal for fast, affordable, color models. Sufficient strength and smooth surface finish.

\* Requires 24 hrs of drying time @ 100 °F (37.8 °C)

**DISCLAIMER:** It is the responsibility of each customer to determine that its use of any Visijet® and infiltrant materials is safe, lawful and technically suitable to the customer's intended applications. The values presented here are for reference only and may vary. Customers should conduct their own testing to ensure suitability for their intended application.



CONTÁCTANOS PARA MAS INFORMACIÓN

+52 (614) 481 4339 (614)424 2482 | info@goal-tech.com.mx  
www.goal-tech.com.mx

[www.3dsystems.com](http://www.3dsystems.com)

Warranty/Disclaimer: The performance characteristics of these products may vary according to product application, operating conditions, material combined with, or with end use. 3D Systems makes no warranties of any type, express or implied, including, but not limited to, the warranties of merchantability or fitness for a particular use.

© 2017 by 3D Systems, Inc. All rights reserved. Specifications subject to change without notice. The 3D Systems logo, Projet and Visijet are registered trademarks and ColorBond, StrengthMax, and Salt Water Cure are trademarks of 3D Systems, Inc.