

Artec Studio 13 has arrived!



Goaltech[®]

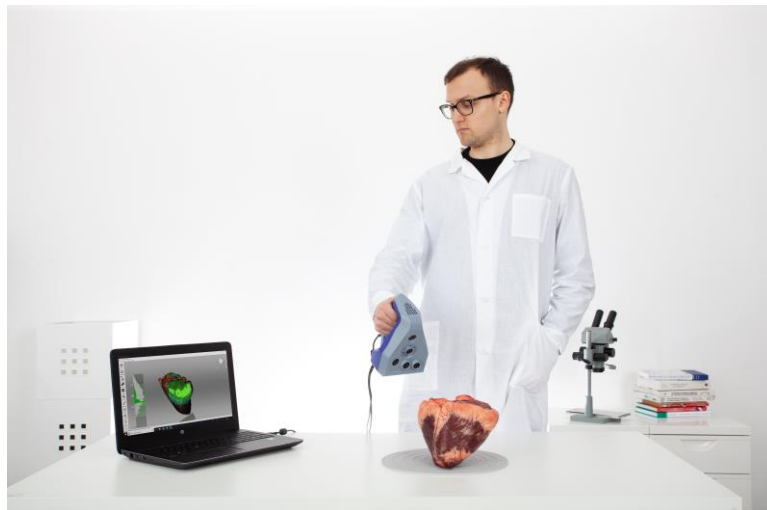
Engineering Solutions

Why it's worth upgrading?

1. Completely new & easy way to scan your objects!

\ **3D Radar:** No more need to focus on the distance meter and object at the same time, as you can now easily & comfortably view the correct scanning distance via your object in colour!

\ **Increased number of frames** whilst scanning (200 by default!), allowing you to clearly see much more data of your object. E.g. Now you can see all of the scanned data of a human body when scanning with Eva!



2. Dazzling visuals - a whole new way to view your 3D scans!

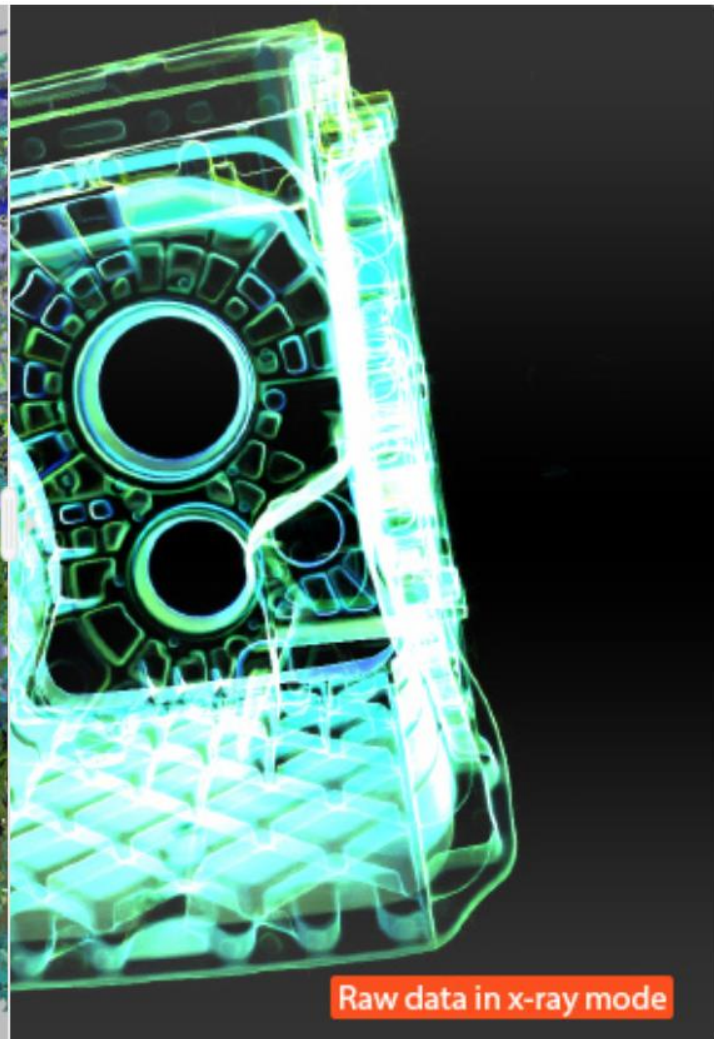
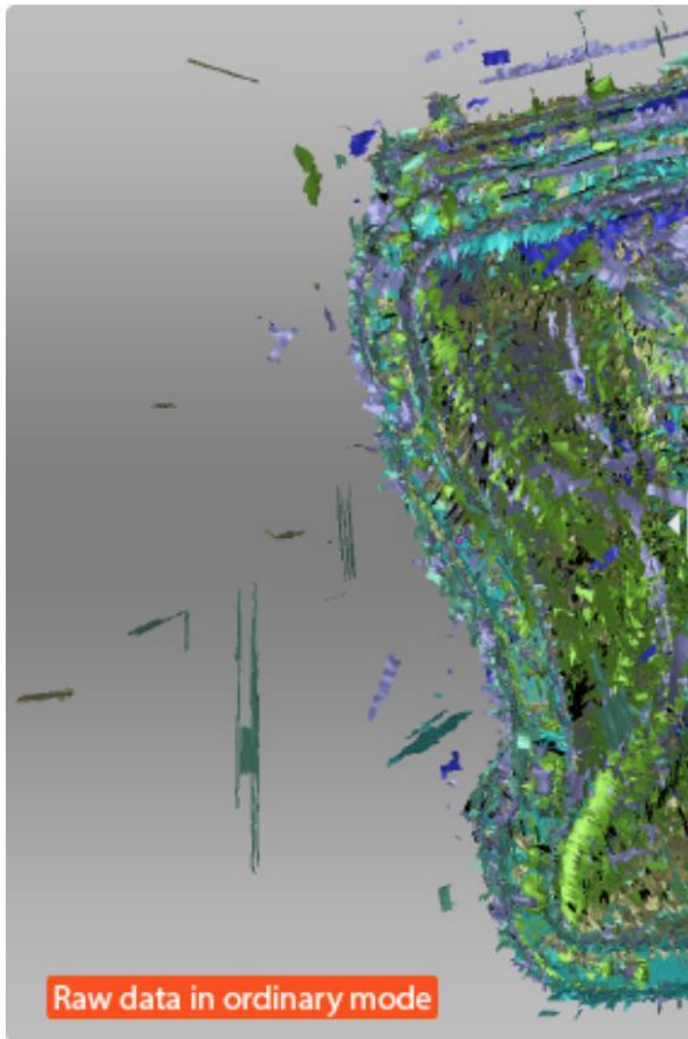
\ **Reworked gloss, shadows and lighting** for better visibility of small geometry areas!

\ **Optimised raw data texture**, allowing you to clearly see the quality of your scan even before fusion.



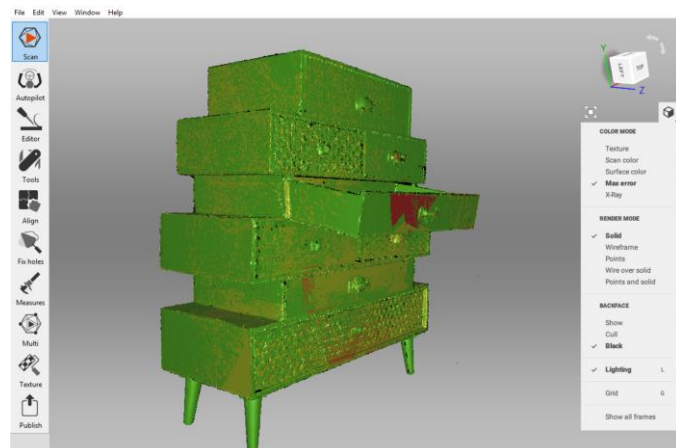
3. X-ray vision - see through any amount of noise!

\ **Highlight with high point density** making data semi transparent. Easy to work with complex geometry + check for errors & misalignments before processing.



4. Now you can see all errors even within frames!

\ **No longer the need to inspect scans manually**, since frames that may need additional attention are automatically highlighted for you.



5. Process huge data sets faster and easier than ever!

\ **Object size or the amount of frames** are no longer an obstacle! Studio 13 can now process up to 500 million polygons!

\ **Scan even bigger objects** with Ray, Leo, Eva and add high detailed textures with Space Spider for maximum resolution.



6. Boosted Global Registration

\ **Double the speed** of GR in Studio 12 and 20X faster than Studio 11 - the most powerful & effective we've ever produced!

\ **GR can now be used on a greater number of object types and surfaces** that were previously much more difficult to process in earlier versions of Artec Studio, such as ceramics, glass, dark or shiny surfaces.

\ **Customise your GR** with the addition of 2 new tools: **Key Frame Ratio & Feature Search Radius**, giving you versatility and choice between speed or a more thorough global registration.

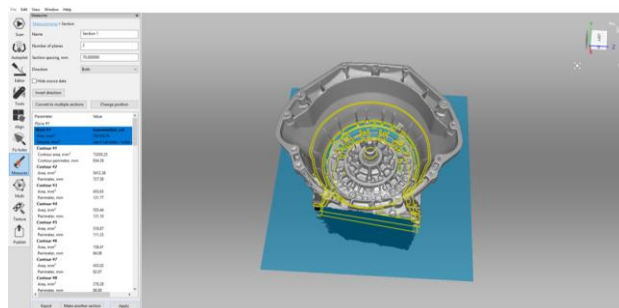
Progress...



Up to
250%
faster

7. Full DXF functionality for CAD!

\ **Easily make DXF sections** of any 3D model in Artec Studio and export even non-closed contours to CAD software such as Design X or SOLIDWORKS.





STUDIO 13

Ultimate

For use with Artec 3D scanners and 3rd party sensors:

Artec Leo, Eva, Eva Lite, Space Spider, Spider, plus discontinued models (MH and MHT series AG, AC, W2 and T2)*

Microsoft Kinect for Windows V1 & V2, ASUS XTion, PrimeSense Carmine, Intel RealSense F200 (IVCAM), R200 (DS4) & SR300, XYZprinting 3D scanner

Professional

For use with Artec 3D scanners:

Artec Leo, Eva, Eva Lite, Space Spider, Spider, plus discontinued models (MH and MHT series AG, AC, W2 and T2)*

**For information on compatibility with other series of discontinued scanners, please contact support@artec-group.com*



Goaltech®

Engineering Solutions

CONTÁCTANOS PARA MÁS INFORMACIÓN

+52(614)481 4339 (614)424 2482 | info@goal-tech.com.mx

www.goal-tech.com.mx